

AVAILABLE DRAWER FRONTS FOR
IN-LINE® TOWERS



A: Full Pull



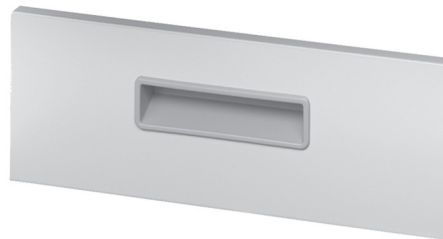
Q: Square, Satin Nickel Bar Pull



S: Square, Satin Nickel Loop Pull
(Add "B" suffix for black pull)



D: Radiused, Recessed Pull



F: Square, Recessed Pull



N: Radiused, Satin Nickel Pull
(Add "B" suffix for black pull)