

AVAILABLE DRAWER FRONTS FOR IN-LINE® TOWERS



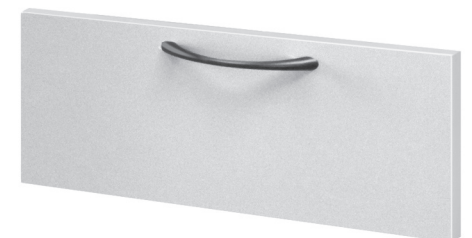
A: Full Pull



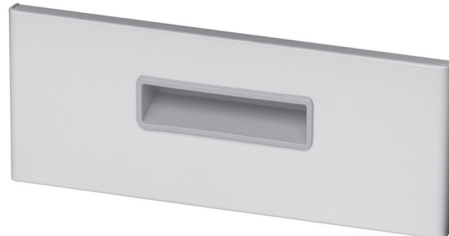
Q: Square, Satin Nickel Bar Pull



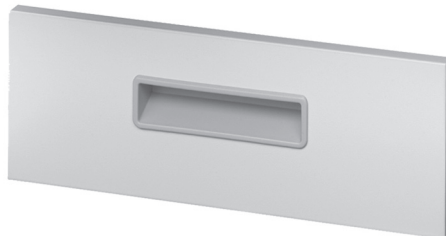
S: Square, Satin Nickel Loop Pull
(Add "B" suffix for black pull)



Y: Square, Black Wire Pull



D: Radiused, Recessed Pull



F: Square, Recessed Pull



N: Radiused, Satin Nickel Pull
(Add "B" suffix for black pull)